

**ULTRASONIC MILK ANALYSER DIRECT MEASUREMENT
OF COLD MILK SAMPLES, starting at 5°C
No need of periodical calibration**

Lactoscan Indi

Special Design for Indian Market

*Additional possibility
for manual cleaning
with piston*



*The measurement accuracy
not dependant on milk's acidity*

*High-end ultrasonic technology
for analyzing any kind of milk*

- *Easily readable results*
- *Self calibration without computer*
- *Control of the cleaning procedures!*
- *Register of cleaning cycles!*
- *Keeping cleaning history and sharing data with DPU!*

KEY FEATURES:

- *User-friendly: simple in operation, maintenance, calibration and installation*
- *Portable and compact design*
- *Very small quantity of milk required*
- *Low power consumption*
- *No use of hazardous chemicals*
- *One year full warranty*
- *Adjustments of the measurement accuracy can be done by the RS 232 interface*
- *ESC POS Printer Support*
- *Two samples self-calibration*

MEASURING PARAMETERS:

<i>Fat</i>	<i>Added water</i>
<i>Solids-non-fat (SNF)</i>	<i>Salts</i>
<i>Density</i>	<i>Freezing point</i>
<i>Protein</i>	<i>Total Solids (option)</i>
<i>Lactose</i>	<i>Ion meter (option)</i>
<i>Milk sample temperature</i>	

SPECIFICATIONS Lactoscan Indi:

Parameter	Measuring range	Accuracy
Fat	0,01/25%	±0,06%
SNF	3%/40%	±0,15%
Density	1000/1160 kg/m ³	±0,3kg/m ³
Protein	2%/15%	±0,15%
Lactose	0,01%/20%	±0,20%
Added Water content	0%/ 70%	±3,0
Temperature of milk	5°C/ 40 °C	±1°C
Freezing point	-0,400°C/ -0,700°C	±0,005°C
Salts	0,4% - 4%	±0,05%



Milk analyzer Lactoscan makes quick analysis of milk and liquid dairy products:
 Cow milk (25%) Whey Concentrated milk (up to 1160kg/m³)
 Sheep milk Cream Recovered milk
 Buffalo milk Skimmed milk (0,01% FAT) Etc.

*And can be calibrated by the customer with specific samples of:
 Yoghurt, Flavoured milk, Ice-cream mixtures etc.*

*This project is
co-funded by the
European Union*



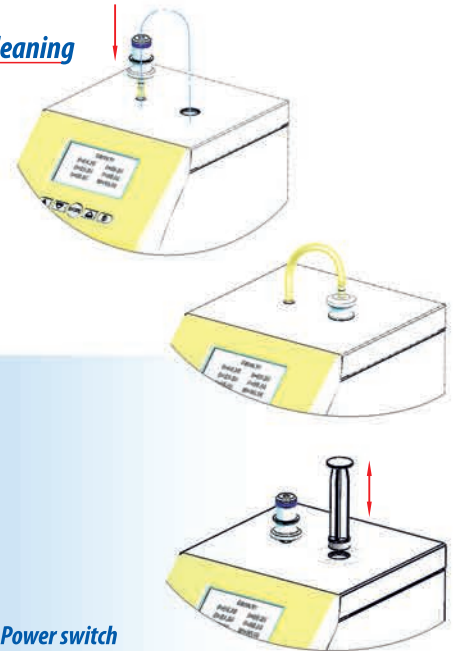
ENVIRONMENTAL CONDITIONS:

Ambient air temperature
10°C-40°C (option 43°C)

Milk temperature 1°C-40°C

Relative humidity 30% - 80%

Lactoscan Indi



Manual cleaning

1. Power switch
2. 12 V output
3. 12 V input
4. air output
5. Serial interface (RS232/ printer)

ELECTRICAL PARAMETERS:

Switching Adapter

Input:
100 - 240 V ~ 1.6 A max.
50-60 Hz

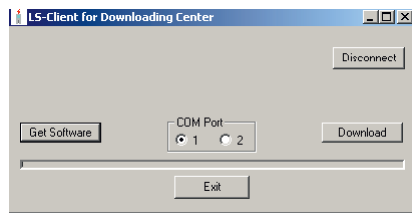
Output: +12 V 4.17A min.
Output power: 50 - 65 W

MECHANICAL PARAMETERS:

Combined SS and
high-tech plastic cover box

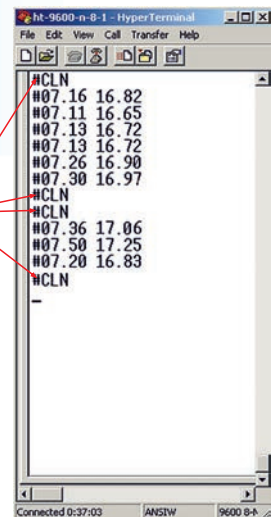
Dimensions (W x L x H)
130x230x220 mm

Weight < 3 kg



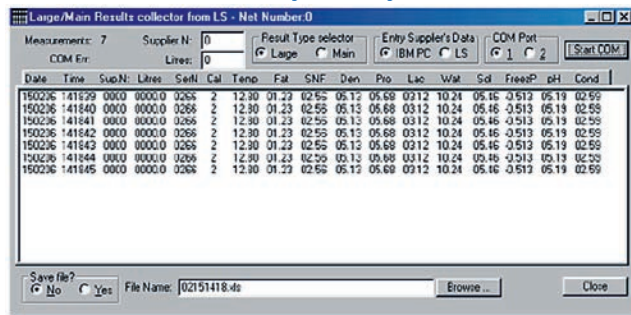
Internet Remote
Firmware Update
(Download center)

Message
for cleaning
cycle



MILK DATA Program:

milk collection accounting and management software.



Embedded function
real date and time -
registers the exact
time for delivery of
milk in the milk
collecting center



ECS POS Serial Printer (option)
Prints the result of the
current measurement.



MILKOTRONIC LTD

Bulgaria, 6000 Stara Zagora
167, Tsar Simeon Veliki, A, 25
Tel: + 359 457 670 82,
Fax: + 359 457 670 83

e-mail: salesdpt@lactoscan.com
Eng, Spa, Port: +359 886 841 389
e-mail: sales2@lactoscan.com
Eng, Rus: +359 886 841 395
e-mail: mainservice@lactoscan.com
Eng, Rus: +359 888 811 017

e-mail: m.mihneva@lactoscan.com
Eng: + 359 885 597 232
e-mail: milkanalyzers@lactoscan.com
Eng, Rus: +359 896 753 803

distributors: